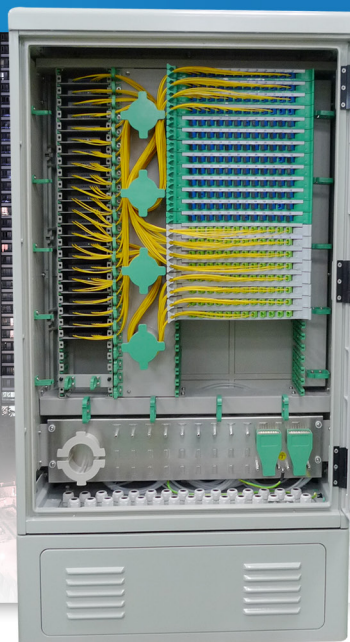


IDC-1400

Outdoor Optical Distribution Cabinet

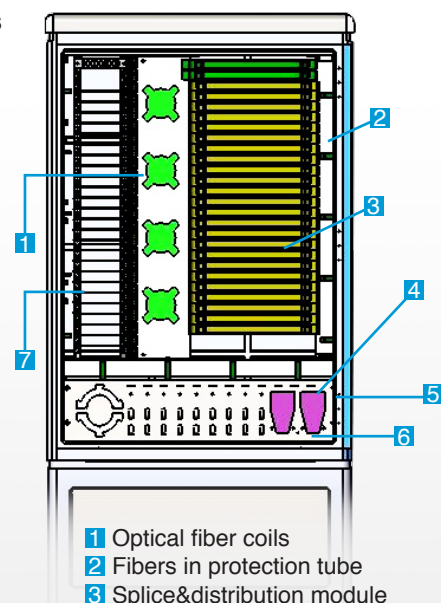


Features

- ◆ For outdoor applications
- ◆ Weather proof and dust proof, meeting IP55
- ◆ Thermosetting fiberglass-reinforced polyester cabinets can endure climate changes and adverse environment, and are rust proof
- ◆ Well protected from accidental or malicious damages
- ◆ Complete cable routing design with fiber bend radius over 40mm
- ◆ Modular design and easy installation, modules are exchangeable
- ◆ Optimal management for patch cords with fiber storage units
- ◆ Suitable for ribbon and non-ribbon optical fibers
- ◆ Capacity up to 216 ports
- ◆ Tri-point-locking ensure safe and reliable
- ◆ Up to 25 Splitter tray
- ◆ Splice tray for direct splice available
- ◆ Dimension : 750x350x1330(WxDxH mm)

Splice & Distribution Module

- ◆ Combined splice and distribution
- ◆ Suitable for ribbon and non-ribbon cables
- ◆ Oblique installation of adapters
- ◆ Suitable for installation with FC, SC, LC and ST adapters



- 1 Optical fiber coils
- 2 Fibers in protection tube
- 3 Splice&distribution module
- 4 Cable stripping protection
- 5 Optical cables fixing and grounding boads
- 6 Optical cable entries
- 7 Splitter compartment

